



# UNFCCC COP27 SIDE EVENT: 12/11 2022 15:00-16.30 Room: Memphis (Blue Zone)



## Local Climate Sustainable Energy Solutions in Global Stocktake (GST) Why, How and From Where

Welcome by the organisers INFORSE – SusWatch Kenya, - INSEDA - SE

Moderator: Judit Szoleczky, INFORSE, Santosh Patnaik, CANSA

### East Africa:

Promoting local solutions as important climate and development solutions in East Africa

*Mary Swai, TaTEDO, INFORSE-East Africa, Tanzania (@)*

Launch: 100 % Renewables Scenario – Uganda

*Richard Kimbowa, UCSD, INFORSE East Africa Chair (@)*

### Local Solutions in GST, [?]

#### Key message from East Africa

*Nobert Nyandire, Suswatch [?]*Kenya

**Europe:** Paris compatible scenarios for reducing emissions with transition to 100% RE, EE, sufficiency, key message for GST from Europe.

*Gunnar Boye Olesen, Sustainable Energy, Denmark [?]*INFORSE-Europe

### South Asia

Promoting local activities in South Asia supported by eco-village development initiatives *Anzoo Sharma, CRT Nepal*

Successes with local solutions in South Asia & their promotion

*Sanjiv Nathan INFORSE South Asia & INSEDA, India*

Launch of database, documenting successful local solutions

*Abdul Arif, Grameen Shakti, Bangladesh*

Local Solutions in the GST, Why and How

*Dumindu Herath, IDEA, Sri Lanka*

### Comments:

*Stephen Nzioka, Ministry of Energy, Dep. RE Kenya*

*Dr Thusitha Sugathapala, from Sri Lankan Delegation*

### Dialogue, Conclusion

[?]





**UNFCCC COP27 SIDE EVENT: 12/11 2022**  
**15:00-16.30 Room: Memphis (Blue Zone)**



**UNFCCC COP27 SIDE EVENT: Sustainable Energy Solutions in Global Stocktake (GST)**  
**Why, How and from Where**

**Local Solutions in GST, 100 % Renewables Kenya**  
**Key Message from East Africa**

**Nobert Ochieng Nyandire,**  
**Suswatch Kenva**



# About Sustainable Environmental Development Watch (Suswatch Kenya)

- ❑ A member Organization formed in 2002 as part of the Global Sustainability Network.
- ❑ Registered Officially in 2011
- ❑ Composed of CSO's engaged in varied thematic issues contributing towards Sustainable Development Agenda
- ❑ Operating in East Africa and international level, influencing policy formulations on climate change, Renewable Energy etc and Capacity building of community groups on the above.



# East African Civil Society for Sustainable Energy & Climate Action (EASE-CA)

## Opportunity

- ❑ One of the sectors affected and contributing towards climate change is energy.
- ❑ The use of unsustainable energy sources contributes a great deal towards the global GHG emissions which is the main contributor towards the climate change phenomenon.
- ❑ Unfortunately, in East Africa, the main energy sources are unsustainable constituting biomass and fossil fuel use. There was therefore a need to commence a dialogue on transitioning to renewable and sustainable energy in line with **SDG 7** and **SDG 13**.

Project partners



UNFCCC COP27 SIDE EVENT - Sharm El Sheikh, Egypt - Local Climate - Sustainable Energy Solutions in GST.

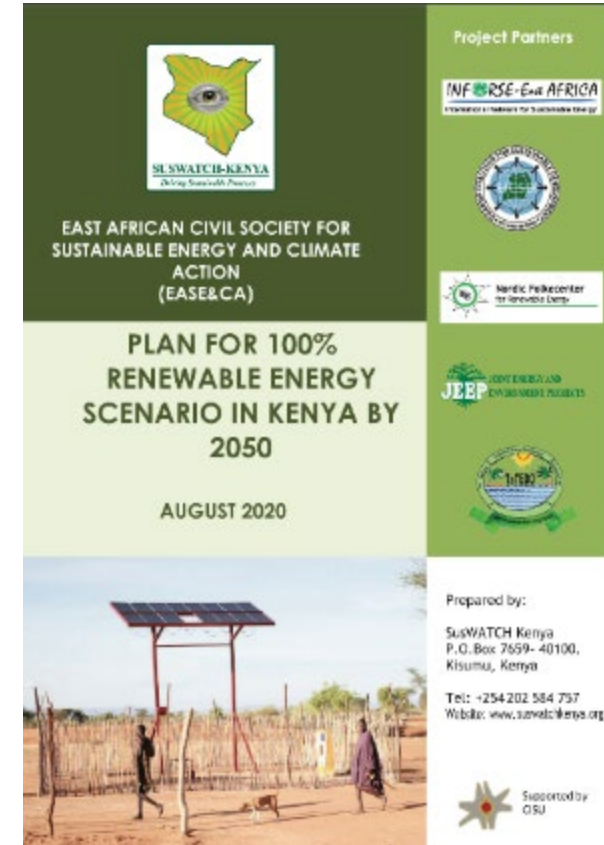
Why, How and from Where // INFORSE - INSEDA - SusWatch Kenya - SE 12/11 2022, 15:00-16.30 Room: Memphis



# East African Civil Society on Energy and Climate Action (EASE-CA)

## Milestones

- The **EASE-CA** project has managed to increase access to sustainable energy and other climate solutions for local communities in Kenya, Tanzania and Uganda including both women's and men's full and effective participation in leadership for improved livelihoods and reduction of poverty.
- This has been achieved through CSO dialogues on transitioning to 100% renewable energy. Mapping and dissemination of local solutions on renewable energy **and other climate, Development of 100 % renewable energy scenario for Kenya by 2050**





# Why Local Solutions in GST?

- ❑ The **GST** should be used to identify additional actions that can increase ambition. **Here local solutions** have a huge potential.
- ❑ Three basic issues have to be taken into account, namely:
  - **Recognition of the local solutions** to be part of the NDCs;
  - Continuous **learning from multi-actor actions** on the ground to mitigate and to adapt to climate change; and
  - **Scale up provision and access to climate finance** (mitigation finance as well as adaptation finance) for the actors that are implementing the local solutions including CSOs, Communities, Women, Youths and other groups so that they are able to implement local solutions.





# Thank you



**More information:**  
**NOBERT NYANDIRE**  
**SUSWATCH KENYA**

**Email/website:**

**[www.suswatchkenya.org](http://www.suswatchkenya.org)**

More info Contact: Suswatch Kenya

[www.Suswatchkenya.org/ease](http://www.Suswatchkenya.org/ease)

EASE & CA Project: [inforce.org/africa/EASE.htm](http://inforce.org/africa/EASE.htm)

Online Catalogue of Local Sustainable Solutions: [www.localsolutions.inforce.org](http://www.localsolutions.inforce.org)

100% Renewables Kenya: [www.suswatchkenya.org/100-renewable-energy-plan-for-kenya-by-2050/](http://www.suswatchkenya.org/100-renewable-energy-plan-for-kenya-by-2050/)

INFORSE 100 % Renewable Scenarios in Africa: [www.inforce.org/africa/Vision2050.htm](http://www.inforce.org/africa/Vision2050.htm)

Proceedings: <http://www.inforce.org/cop27.php>



**UNFCCC COP27 SIDE EVENT - Sharm El Sheikh, Egypt - Local Climate - Sustainable Energy Solutions in GST.**

**Why, How and from Where // INFORSE - INSEDA - SusWatch Kenya - SE 12/11 2022, 15:00-16.30 Room: Memphis**